

+ 3 4 2' C& DóD©4 *a ”

JRS2系列热过载继电器（以下简称“热继电器”），适用于交流50Hz/60Hz、电压至690V及以下、电流

4

5 结构特征

保护

产品外观	额定电流 A	相匹配熔断		

Technical drawing showing a cross-section of a mechanical part. The drawing includes a central shaft with a diameter of 20 units. The shaft is surrounded by a housing or support structure. The drawing is oriented vertically on the page.

Section	Material	Dimensions	Notes
1	Steel	20 x 20	
2	Aluminum	10 x 10	
3	Brass	5 x 5	
4	Copper	3 x 3	
5	Iron	2 x 2	
6	Steel	15 x 15	
7	Aluminum	8 x 8	
8	Brass	4 x 4	
9	Copper	2 x 2	
10	Iron	1 x 1	
11	Steel	12 x 12	
12	Aluminum	6 x 6	
13	Brass	3 x 3	
14	Copper	1.5 x 1.5	
15	Iron	0.5 x 0.5	

产品外

8 附件说明

外形及安装尺



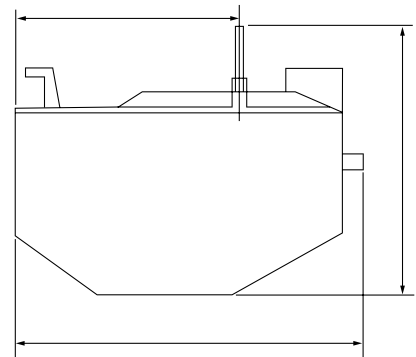
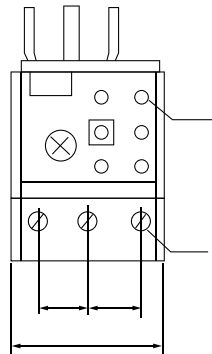


图3 JRS2-45插入式安装

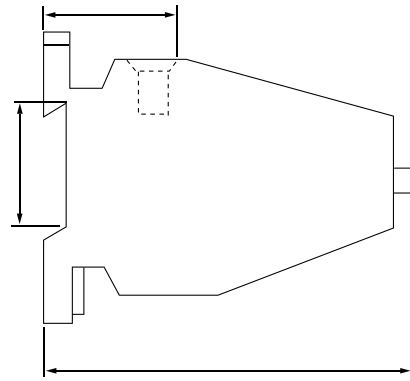
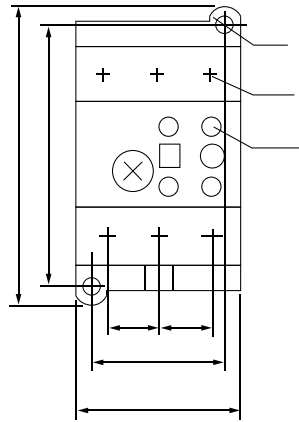
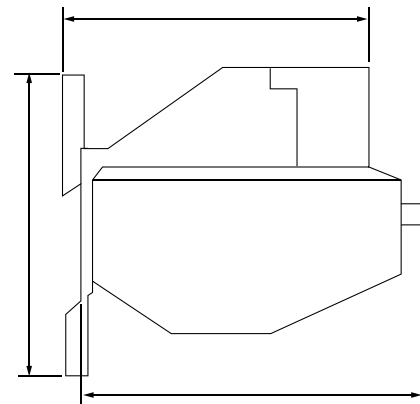
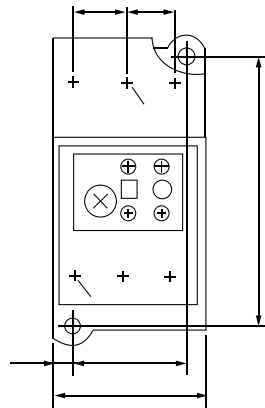


图4 JRS2-63独立式安装



型号	a	b (组合螺钉)	c (组合螺钉)
JRS2-12.5/F	10	M4	
JRS2-25/F	14.3	M4	
JRS2-32/F	14.3	M5	

图5 JRS2-12.5、25、32独立式安装

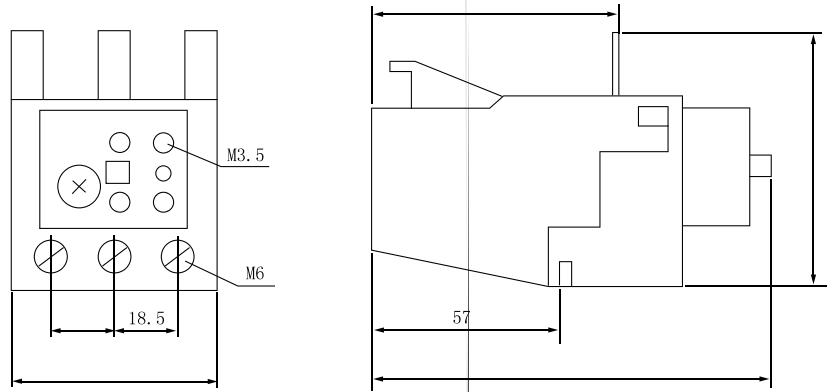


图6 JRS2-80插入式安装

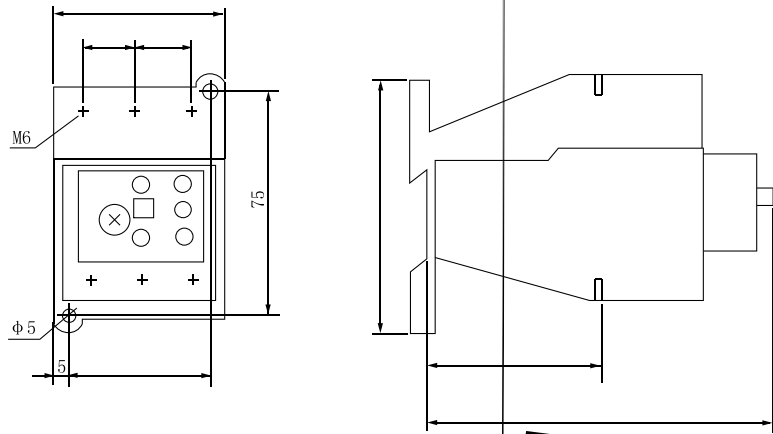


图7 JRS2-80独立式安装

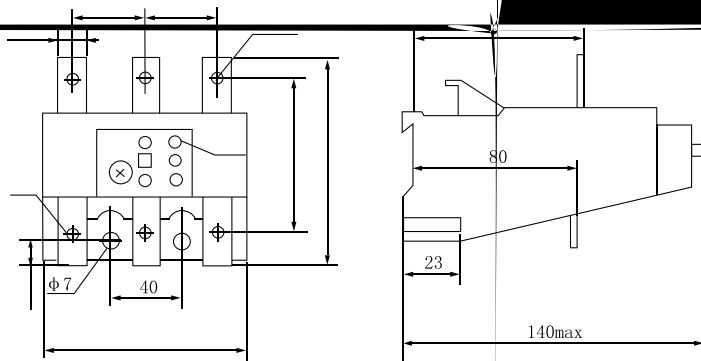


图8 JRS2-135独立式安装

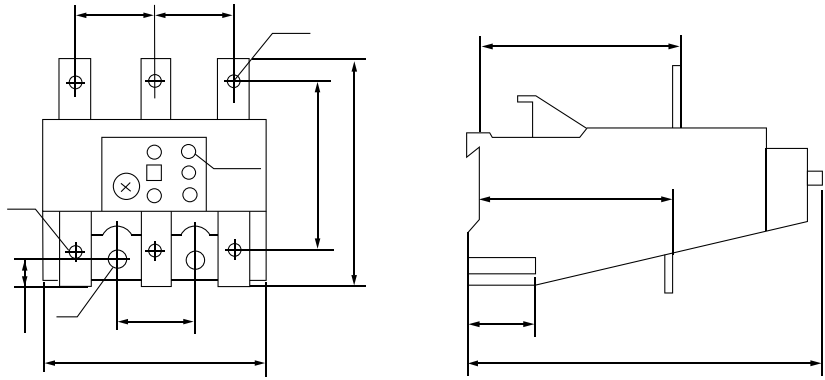
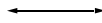


图9 JRS



订货须知