

TGB1NLA- 32 63

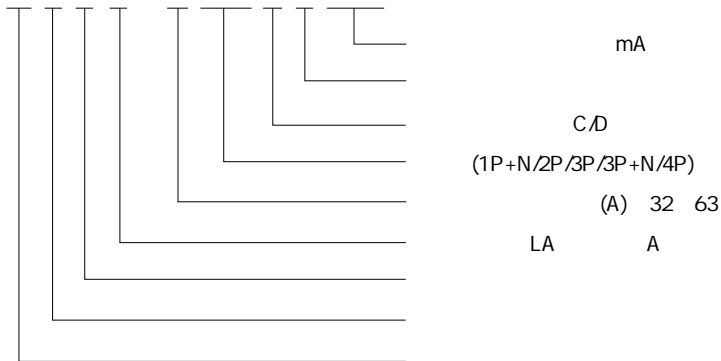


1

TGB1NLA- 32 63
230V /400V 63A

2

TG B 1N LA - 63 1P+N C 16 30mA



3

3.1 1 1

	TGB1NLA 32		TGB1NLA 63	
	GB/T16917.1		IEC61009-1	
	CCC			
	1P+N	2P 3P 3P+N 4P(N)	1P+N	2P 3P 3P+N 4P(N)
Hz				
A	I _{nm}	32		
A	I _e	6 10 16 20 25 32	40 50 63	
V	U _b	AC230(1P+N 2P) AC400(3P 3P+N 4P)		AC230(1P+N 2P) AC400(3P 3P+N 4P)
V	U _i			
kV	U _{imp}			
kA	I _{cs}			
kA	I _{cn}			
		C(5n 10n D)10n 14n	C(5n 10n D)10n 14n	
		2		2
		MK CF SD MK+CF + M MN M+MN	MK CF SD MK+CF + M MN M+MN	
		A		A
nA	I _n	15 30 50 75 100 300	30 50 75 100 300	
		0.1s		0.1s

TGB1NLA- 32 63

1

	TGB1NLA- 32	TGB1NLA- 63
	20000	20000
	IP20	IP20
	- 35 +70	- 35 +70
	2000m	2000m
(mm ²)		25
(N _h)	2	2.5
	II III	II III
	THB5- 7.5	THB5- 7.5

3.2

2

2

	A			
	1. 13In		t 1h	
	1. 45In	1. 13In	t 1h	5s
	2. 55In		1s t 60s In 32A 1s t 120s In 32A	
c	5In		t 0.1s	
	10In		t 0.1s	
	10In		t 0.1s	
	14In		t 0.1s	

30

3.3

C

D

TGB1NLA- 32 63

3.4

25mm²

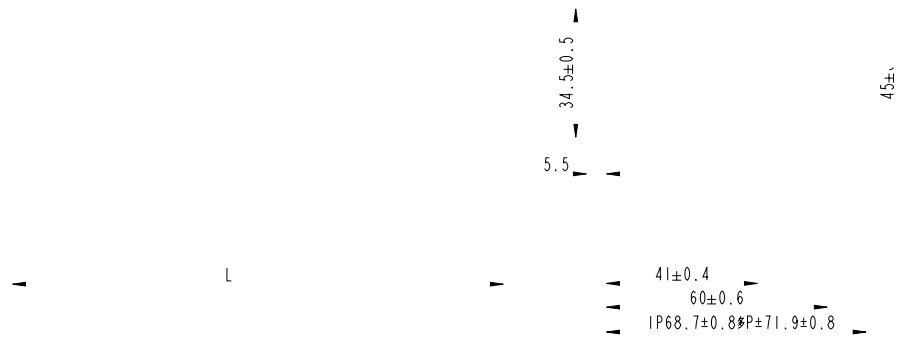
3

2.5N· m

3

A	mm ²
16 20	2.5
25	
32	
40 50	

4



4

		L (mm)
TGB1NLA- 32		
TGB1NLA- 63		
TGB1NLA- 32	2P	
TGB1NLA- 63	2P	72
TGB1NLA- 32		
TGB1NLA- 63		
TGB1NLA- 32		
TGB1NLA- 63		117
TGB1NLA- 32		117
TGB1NLA- 63		

TGB1NLA- 32 63

5

5.1		TGB1NLA- 32
5.2	C	
5.3	2P	
5.4	10A	
5.5		30mA
5.6	50	
5.7	TGB1NLA- 32 2P C10 30mA	50